

# Welcome

to Alliant International University



Congratulations on your admission.  
We are looking forward to getting to know you.



Welcome to Alliant

# Table of Contents

---



# Welcome to the Alliant Community



It is my great pleasure to congratulate and welcome you to Alliant International University. Your admission signifies that we are confident that you will succeed in your studies at our institution and go on to make important contributions to your profession and your community. You are now part of our family of universities that includes six campuses in California. Our international and multicultural approach to education is an important pillar of strength that lives within our mission.

At Alliant, we aim to give students like you the education and skills necessary to achieve your highest goals, and also to make a positive impact on the lives of others. We want you to be able to work successfully in the achievement of organizational and social goals, to provide leadership for the common good, to be able to bridge international and cultural differences, and to contribute to advancing knowledge and practice in your chosen field. We welcome you to use your knowledge and skills to make a difference in the world.

This is an exciting time to be entering our community. We are building a new kind of global university to meet the challenges and opportunities of the twenty-first century with continuous innovation. I am confident that you will find the faculty, resources and programs here to enable you to meet your personal goals.

On behalf of the faculty, staff and students of Alliant, we welcome you to our community and we look forward to having you join us!

Sincerely,

A handwritten signature in black ink, appearing to read 'Andy Vaughn'. The signature is stylized and fluid, with a long horizontal stroke extending to the right.

Andy Vaughn  
President

# Sign Your Enrollment Agreement

Congratulations on your admission into Alliant International University!

An Enrollment Agreement will be forthcoming once we are notified that your SEVIS fee is paid. This will be sent electronically via DocuSign to your personal email on file. Please review the following information and follow-up as needed:

- Next Steps for Admitted Students
- Student & Scholars Health Insurance Policy
- Insurance Agreement
- Top 10 Reasons to Attend Alliant
- Tips for a Successful Visa Interview
- How to Make Your Payment
- Attend Orientation and Present your Official Transcripts to the Admissions Office if you haven't done so already

Please do not hesitate to contact me if you have any questions.

Again, congratulations and I look forward to personally greeting you on campus.

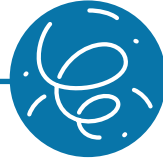
Sincerely,

Sean Rose  
Director of Admissions

Please return forms by email to [sean.rose@alliant.edu](mailto:sean.rose@alliant.edu) OR by mail to:  
Alliant International University  
ATTN: Sean Rose  
10455 Pomerado RD  
San Diego, CA 92131

# Welcome to Alliant

## Next Steps



### Welcome to the Alliant Family!

To get the most out of your of your Alliant experience, we've listed some required steps and helpful resources below. If you have questions or need additional support, your admissions counselor is standing by to help.



### Sign Your Agreement

Keep an eye out for an email from DocuSign, and when your enrollment agreement arrives, review and sign it along with any accompanying documents. This step will confirm your intention of attending the university and save your spot in our fall cohort.

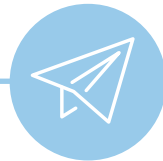
*If you have any questions about your enrollment agreement, you can contact your admissions counselor via email at [admissions@alliant.edu](mailto:admissions@alliant.edu).*



### Review Requirements

You can do this with your admissions counselor. All outstanding documents are required one week prior to the start of classes. If you are missing prerequisites, official transcripts, or test scores, please submit as soon as possible.

*Official transcripts should be mailed to our Admissions at: 10455 Pomerado Rd, San Diego, CA 92131. If you are submitting official e-transcripts or test scores, please email to [apc@alliant.edu](mailto:apc@alliant.edu).*



### Setup Your Email and Alliant Portal

Shortly after confirming your attendance with Alliant, you will receive an email from our IT department with instructions on how to access your Alliant email and the student portal.

*If you have difficulty logging in or do not receive the email, please contact our HelpDesk at (866) 825-5426 or [ITHelp@alliant.edu](mailto:ITHelp@alliant.edu). You can also visit [ithelp.alliant.edu](http://ithelp.alliant.edu). Once your Alliant email is setup, please check it regularly for Alliant communications.*

### Plan for Your Investment

Please login to the student portal to make your payments or learn [How to Make a Payment](#).

*Please keep in mind that you need to be financially ready by the first day of classes. Set up an appointment with [Student Finance](#).*



### Attend Orientation

Orientation is a mandatory event to help support you and other new students transition into our community. Orientation will take place the week prior to classes starting. An email with details about orientation will be sent to you closer to your start date in July.





# Welcome

from the dean



Congratulations! Based on your background and your decision to pursue higher education, we are offering you admission into the California School of Management and Leadership (CSML) program. We look forward to you joining us.

Alliant has a history of more than 100 years of academic excellence, and is accredited by WASC Senior College and University Commission. CSML is accredited by the Accreditation Council for Business Schools and Programs (ACBSP).

When you graduate, you will be added to the list of other successful Alliant alumni such as US House Representative Judy Chu from California, Rear Admiral Barry Black, the 62nd Chaplain of the US Senate, and Dan McAllister the San Diego County Treasurer-Tax Collector. CSML has its own legacy of distinguished faculty, notably Dr. Igor Ansoff, the founder of the environmental turbulence theory for strategic management, Dr. Efraim Turban, a stalwart in decision-making research, and Dr. John Walker, a recognized name in the hospitality sector.

At Alliant we emphasize rigorous academic learning and are confident your program will be rewarding. We'll ensure you're fully supported and that you enjoy many opportunities to learn and contribute to the CSML reputation of excellence.

Congratulations again and welcome to the Alliant family!

Sincerely,

A handwritten signature in black ink, which appears to read "Rachna Kumar". The signature is written in a cursive style and is positioned above the printed name.

Dr. Rachna Kumar  
Dean of California School of Management and Leadership

Welcome to Alliant

# Community Connection



## Meet your IMPACT team

Your IMPACT team includes your campus director, academic advisor, and student finance officer. They can help you register for classes and ease your transition. The IMPACT acronym represents our six core values of Inclusion, Mentorship, Passion, Accountability, Communication, and Teamwork.



## Find a Roommate Match

Relocation to, and within, California is one of the immediate challenges many new students face. This questionnaire can help you establish connections for housing and find potential roommates. Alliant does not match roommates, nor do we assume responsibility for matches that are selected by students using this service.



## Attend a Relocation Webinar

Your admissions counselor will email you before your start date with information on how to join a relocation webinar. The relocation webinars can help you find housing opportunities and adapt to living in the area.

# Welcome to Alliant

## Student Housing

---



If you're looking for housing options near campus, we've got you covered. Our housing partners are located within a 10-20 minute drive to our Irvine, San Francisco Bay Area, San Diego, Fresno, Los Angeles, and Sacramento campuses. Many are located near dining, shopping, and public transit and include amenities\* such as:

- |                            |  |
|----------------------------|--|
| Fully furnished apartments | Exercise/fitness clubs                                     |
| On-site or in-unit laundry | Recreational areas ( <i>BBQ, pool, picnic area, etc.</i> ) |
| Modern appliances          | Secure package delivery                                    |
| Parking                    | Secure building access for safety                          |
| Bicycle storage            | Pet-friendly   |

Many include Wi-Fi and utilities with your rent. All of them offer great community environments to share with your fellow students!

---

Alliant International University provides this list for information purposes only. Please contact these residences directly.

**For relocation guides and other resources, email [admissions@alliant.edu](mailto:admissions@alliant.edu)**

\*Amenities and services vary by residence.

### Fresno

[Avery Fresno](#)

[averyfresno.com](http://averyfresno.com)

[Cascades](#)

[cascadesaptsfresno.com](http://cascadesaptsfresno.com)

[Greystone](#)

[greystonefresno.com](http://greystonefresno.com)

[Jackson Park Place](#)

[jacksonparkplaceapartments.com](http://jacksonparkplaceapartments.com)

[The Row at Heritage Grove](#)

[therowresidences.com](http://therowresidences.com)

[The Victor Apartments](#)

[liveatthevictor.com/amenities](http://liveatthevictor.com/amenities)

### Irvine

[Stay Elevate](#)

[stayelevate.com/orange-county](http://stayelevate.com/orange-county)

### Los Angeles

[Shea Apartments](#)

[sheapartments.com](http://sheapartments.com)

[Stay Elevate](#)

[stayelevate.com/orange-county](http://stayelevate.com/orange-county)

### Sacramento

[Wexler](#)

[wexlerliving.com/wexler-sacramento-ca](http://wexlerliving.com/wexler-sacramento-ca)

### San Diego

[Anatolia Corporate Housing](#)

[ac-housing.com/locations.html](http://ac-housing.com/locations.html)

[Stay Elevate](#)

[stayelevate.com/orange-county](http://stayelevate.com/orange-county)

### San Francisco Bay Area

[Stone Fire Berkeley](#)

[stonefireberkeley.com](http://stonefireberkeley.com)

[Telegraph Commons](#)

[telegraphcommons.com](http://telegraphcommons.com)

[The Berk](#)

[theberkoncollege.com](http://theberkoncollege.com)



Welcome to Alliant

# Why Choose Alliant

---

Legacy

Network

Experience

Welcome to Alliant

# CSML Core Faculty

---



## Shams Al-Ajrawi – Assistant Professor

PhD, Electrical and Computer Engineering, University of San Diego and San Diego State University (JDP)

Dr. Al Ajrawi has been an editor and reviewer at many IEEE Transaction journals and she has published many research papers in BCI field. Her research interest lies in Brain Computer Interface Application which includes Wireless Network Communication, Artificial Intelligent, Advanced Signal Processing, Machine Learning, and Cybersecurity.



## Rachna Kumar – Dean and Professor

PhD, Management Information Systems, New York University, Stern School of Management

Dr. Kumar has published and presented more than 75 publications in research journals, and conferences in areas related to technology management. One of her areas of consulting is in helping technology startups raise funding for new ventures. She also consults with organizations in building technology structures for trusting and productive remote teams.



## Saba Ozyurt – Professor and Program Director

PhD, Political Science and Government, University of California, Irvine

Dr. Ozyurt is the faculty liaison to the World Council on Curriculum and Instruction (WCCI). Her research interests include crosscultural management, diversity, gender empowerment, economic empowerment of disadvantaged communities, refugee and immigrant communities.



## Huiyu Qian – Assistant Professor and Program Director

PhD, Applied Mathematics with Concentration on Statistics and Probability, Lehigh University

Dr. Qian has years of teaching experience with diverse populations as well as years of corporate working experience in quantitative analytics and research. Her main research interest includes applications of statistics and data science in the areas of marketing, operational optimization, and finance.



## Cory B. Scott – Assistant Professor and Program Director

EdD, Organizational Leadership, University of La Verne

Dr. Scott is a dynamic teacher with an active research agenda, which includes books and articles on various facets of leadership, from multicultural approaches to masculine, feminine, and ethical perspectives. In addition to being a scholar, Dr. Scott brings with him experience in administrative and business communications, conflict management, leadership, operations, entrepreneurship, and sales and marketing.



## Aaron Wester – Assistant Professor and Program Director

Doctor of Management in Organizational Leadership, Information Studies and Technology, University of Phoenix

Dr. Wester has led innovative global analytics and business intelligence initiatives for companies including Google, Microsoft, Facebook, Paypal, etc. He is a published author and public speaker. His research interests include calm analytics strategies in IoT device constructs, organic owned media optimization tactics and behavioral user engagement influences in predictive machine learning environments.



## J. Rob Handley – Assistant Professor

DBA in Instructional Leadership, Organization Development, Jacksonville University

Dr. Handley has a diverse professional career from teaching high school students at the Sweetwater Union School District to working as project manager, sales trainer, and consultant in a variety of industries and the U.S. military.

Welcome to Alliant

# What to Know When Applying for a Student Visa

---

While granting of a visa is not guaranteed, here is some helpful information when applying for a visa:

## 1. Show Ties to Your Home Country

Under US law, people who apply for nonimmigrant visas, such as F-1 or J-1 student visas, are viewed as “intending immigrants” who want to live permanently in the US until they convince the consular officer otherwise. Be prepared to show you intend to return to your residence abroad (usually in your home country) at the conclusion of your studies. These can be things that connect you to your hometown, homeland, or current place of residence, such as a job, family, a house or apartment, financial prospects that you own or will inherit, investments, etc. If you are a prospective student, you may be asked about your plans or promise of future employment, family or other relationships, educational objectives, grades, long-range plans and career prospects in your home country. Each person’s situation is different, of course, and there is no single explanation or document, certificate, or letter which can guarantee visa issuance. If you have applied for the US Diversity (green card) Lottery, you may be asked if you intend to immigrate. If you applied for the lottery but do not intend to immigrate, be prepared to clarify that, for instance, by explaining that you applied for the lottery since it was available but not with a specific intent to immigrate.

## 2. English

The interview will be conducted in English and not in your native language, so be sure to practice English conversation with a native speaker before the interview. Expect to discuss your plans for studying in the US and beyond, your goals, and your ties to your home country. If you are coming to the US to study English, be prepared to explain how English will be useful for you in your home country.

## 3. Speak for Yourself

The consular officer wants to interview you, not your family. If you are a minor and need your parents to be there in case there are questions, they should check with the consulate about the rules or procedures for non-applicant family members to accompany a visa applicant.

## 4. Know the Program and How it Fits Into Your Career Plans

If you are not able to explain why you will study in a particular program, you may not convince the consular officer that you are planning to study rather than to work or stay in the US. You should be able to explain how your studies relate to your career goals and employment prospects. If you will be a graduate student in the US with a research focus, be prepared to talk about your research plans. Consular officials may want a letter from your supervising professor or faculty member that explains your intended goals.

## 5. Be Brief and Positive

Because of the large number of applicants, consular officers must make a decision on the impressions they form during the first minutes of the interview. Keep your answers short and to the point, respond precisely, and do not argue with the officer. If you are denied a student visa, ask the officer what documents you could bring to overcome the denial and request the reason you were denied in writing.

## 6. Supporting Documentation

It should be immediately clear to the consular officer what written documents you are presenting and what they mean. You may only get a few minutes for your interview, so review the consulate’s website to ensure you bring the right documents, including financial documentation, admission letter(s), scholarship letters and others. Be prepared to prove your financial ability to stay in the US with documentation of scholarships, assistantships, or other letters. If you will be a graduate student in the US, officials may want a letter from your supervising professor or faculty member that explains your intended research goals. The financial information indicated on your Form I-20 or DS-2019 should match the evidence provided to the consular officer.

## 7. Different Requirements for Different Countries

If you are from a country suffering economic problems or where many students have remained in the US long-term, you may have more difficulty getting a visa. You may be more likely to be asked about job opportunities at home after your studies, so review your country’s specific requirements on the US consulate’s website.

Several US consulates have created YouTube videos which explain the visa process at their specific posts; check your specific US embassy or consulate to see if a video is available. Also, be sure to check the US State Department's Visa Appointment and Processing Wait Times webpage to find average appointment and processing wait times where you will be applying for your visa.

## 8. Employment

Your main purpose in coming to the US should be to study, rather than to work before or after graduation. While you may work on- or off-campus during your studies, such employment is secondary to the purpose of completing your education. If your spouse or children are also applying for an accompanying F-2 visa, be aware that F-2 dependents cannot be employed in the US. Be prepared to discuss what your spouse intends to do with his or her time while in the US. Volunteering in the community and attending school part-time are permitted activities for F-2 dependents.

## 9. Dependents Remaining at Home

If your spouse and children are remaining behind in your country, prepare to explain how they will support themselves in your absence, particularly if you are their primary source of income. If the consular officer thinks you intend to support your family with money you earn during your studies in the US, your student visa application will almost certainly be denied. If your family decides to join you at a later time, it may be helpful to have them apply at the same post where you applied for your visa, but that is not always required if your family is living in another district.

## 10. Other Special Considerations

You may experience delays in obtaining a visa because of administrative processing, especially if your name is similar to another individual and the consulate needs to check your status or background. This may also happen when your area of study is thought to be in a field of sensitive or critical technology, or your faculty advisor is working with sensitive research materials. Some consular officers may even require additional letters from program directors or academic advisers explaining the specific type of research you'll be involved in and what kind of access to sensitive technology you'll have. If you are unsure whether this applies to your situation, check with your specific US embassy or consulate. You may be asked to explain past visits and stays in the US and/or any prior visa statuses held by you or your family members. Also, if you formerly held a work or STEM/OPT status, you might need to explain the reasons for additional study in the US instead of working at home.

If you stayed beyond your authorized stay in the US in the past, be prepared to explain what happened and provide supporting documentation. If you have close relatives who are US citizens or permanent residents, it may be harder for you to demonstrate that you are not an intending immigrant.

If you are not a citizen or permanent resident of the country in which you currently live or the country where you plan to apply for a visa, you may also wish to explain your intent to return to that country upon completion of your studies in the US.

(Sources: [nafsa.org](http://nafsa.org))

## Checklist of Required Documentation for Your Visa Interview

- Passport valid for travel to the US; must be valid for at least six months beyond your period of stay.
- Nonimmigrant visa application, form DS-160 confirmation page.
- DS160 application fee payment receipt if you paid prior to your interview.
- SEVIS I-901 fee receipt.
- Photo, if not uploaded while completing the online Form DS-160. Photo requirements can be found [here](#).
- Medical evacuation for at least \$50,000
- Program/university information
- Transcripts, diplomas, degrees, or certificates from schools you've attended.
- Cost of deductible, if any, does not exceed \$500 per accident or illness
- Bank statements from you or your sponsor for at least the last six months.
- Any information that shows your intent to return home after the completion of your studies.



Welcome to Alliant

# Office of International Students and Scholars Health Insurance Policy

---

## 1. Introduction

All international students are required to obtain health insurance coverage during their tenure at Alliant. To fulfill this health insurance requirement, students must purchase a health insurance policy that meets all US Immigration insurance requirements.

## 2. Process for New Students

All new, incoming international students starting after February 16, 2016 must demonstrate coverage on or before their arrival, with their own medical insurance coverage. If students fail to demonstrate coverage upon their arrival, they will be required to show proof of coverage before registering for classes. F-1 and J-1 students are expected to communicate their intentions to the Office of International Students and Scholars on or before their arrival.

## 3. Process for Continuing Students

All coverage choices for continuing international students must be evaluated on a yearly basis, consistent with Alliant International University's academic year period. All international students must show proof of compliant health insurance coverage at the start of each academic year. (or their first semester at Alliant if starting during an alternate semester or term). Without showing proof of health insurance each year, students will not be permitted to register for courses.

Students will choose health insurance that meets the provisions below:

- a. Effective throughout the semester and renewable for continuous coverage
- b. Minimum dollar coverage of \$100,000 per illness or injury
- c. Includes outpatient care (doctor visits, outpatient surgery, etc.)
- d. Includes hospitalization
- e. Repatriation for at least \$25,000
- f. Medical evacuation for at least \$50,000
- g. Cost of deductible, if any, does not exceed \$500 per accident or illness

While Alliant International University does not recommend any international student health insurance company, international students have found comparable coverage with these market-offered agencies:

- [International Student Insurance](#)
- [PGH Student Insurance](#)

## 4. Cost of Coverage

We recognize that health insurance adds additional unanticipated costs for students, however the value in health safety provided by a reputable and compliant international health insurance plan protects students' interests while here in the United States. Many options for student health insurance exist in the open marketplace. Be sure to research the options carefully to ensure that your health care needs will be met while in the United States and make sure that the company you choose is reputable and maintains the highest ratings.

## 5. Exceptions and Special Cases

### a. Study Abroad Students:

Students who are planning to study at Alliant International University for one semester only are required to meet the same requirements as those staying for a full academic year. The same policy applies to Study Abroad and Exchange Students as for full time, degree seeking students.

### b. Students with Embassy-Sponsored Plans or coverage through a US company:

Students with embassy/cultural mission-sponsored health insurance plans are required to provide the International Student Services Office a copy of a financial guarantee or embassy or company insurance card at time of immigration check-in.

### c. Leave of absence:

If a student takes a leave of absence or their immigration status is terminated, it is the student's responsibility to connect with the International Student Services Office advisor to update the health insurance coverage records accordingly.

Welcome to Alliant

# Insurance Agreement

---

As an Alliant International University international student or scholar with an F-1/J-1 or other visa, the confirmation check marks indicate that I agree and will comply with the statements indicated inside the box below:

Name: (First, Last)\* \_\_\_\_\_

Date:\* \_\_\_\_\_ (mm/dd/yyyy)

**By signing below, I certify that I have read and understand the Alliant Health Insurance Policy;**

- I understand that I am required to have health insurance coverage applicable in the United States for the duration of my stay with the university.
- I understand that I must show proof of equivalent insurance coverage by completing the online waiver by the published Alliant International University deadline.
- I understand that I must provide a copy of my insurance certificate in English prior to, or at the time of check in.
- I understand that I am fully responsible for reviewing the coverage of my plan and for understanding the insurance claims process. I understand that Alliant staff are not agents of the Alliant International University insurance plan and are not qualified to advise students on issues such as claims processing and estimated costs of medical procedures.
- If I fail to pick up any claim receipts and/or medical bills that arrive at the International Student Services Office (ISSO), I give permission for the ISSO staff to open these documents, scan them and send them to me via email provided that have been given ample notice to retrieve the documents. (minimum: one month)

Signature: \_\_\_\_\_

Date: \_\_\_\_\_ (mm/dd/yyyy)

Welcome to Alliant

# Covid-19 Vaccination Policy

---

## We welcome you to campus to begin your journey!

To ensure the health and safety of our community, we have adopted several processes that you must follow before coming to campus. Specifically, you must either provide proof of full vaccination or have an approved exemption on file.

The deadline to meet this requirement is one week prior to your start date, so we encourage you to begin the process now.

Instructions on the approval process for returning to campus can be found on our Covid-19 vaccination policy page and, as always, we are here to help you through this process or anything else you may need as you join our Alliant family.

Please note that you must confirm your attendance to get access to upload your vaccine information or submit an exemption. This is included in your acceptance letter so you may prepare before your start date. Once you submit your signed enrollment agreement you may access additional information.

Please contact your [admissions counselor](#) should you have any questions.





See you in the fall!  
[alliant.edu](http://alliant.edu)

